

I-Fit Personal Ergonomic Adjustment Software.

I Fit. You Fit. We All Fit. With iFit.

Workers of all sizes from the 5th to the 95th percentile get the precise ergonomic height adjustment with our patent pending, exclusive I-Fit Personal Ergonomic Adjustment Software.

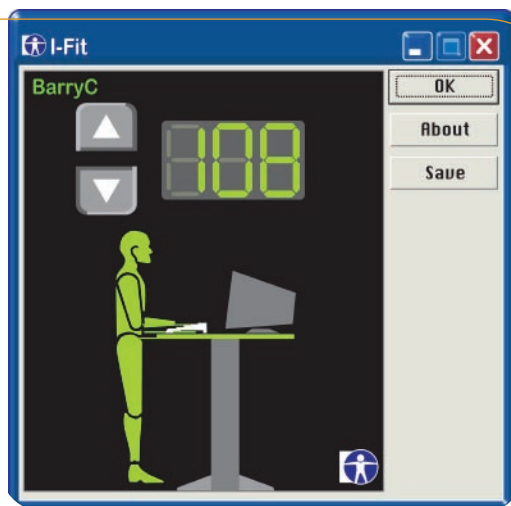
Once established, optimum individual heights for the keyboard and monitor surfaces are easily achieved using I-Fit .

With a simple click, each worker can instantly adjust any station to his/her personal ergonomic settings with effortless precision.

Key Concepts / Benefits

Benefits

- Precise automatic positioning of adjustable surfaces for sit and stand working posture for each individual user
- Enables unlimited users at a single workstation to have accurate individualized ergonomic settings
- Easy to use, one click operation
- An individual can use any station by simply logging in
- Enables agency to implement a proactive ergonomics program quickly and easily
- Reporting features enable management to evaluate real time and historical usage for ergonomic interventions to protect employees health and safety



I-Fit's easy to use one-touch system provides a visual aid to ensure users find their correct setting which is indicated in "green". Desktop-mounted controls make it a snap to adjust the two worksurface heights to the correct numbers for each individual using the station.

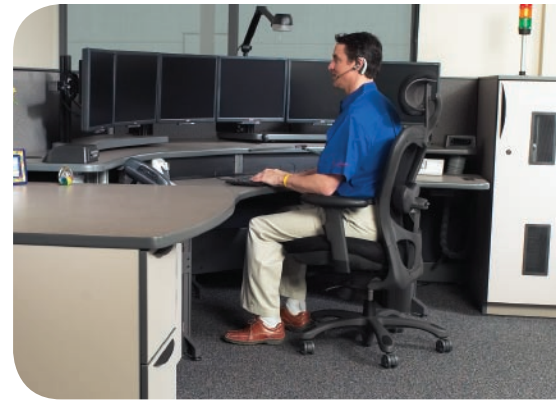


Form • Function • Health • Performance

Differentiators

The Xybiz Difference

- Exclusive, patent pending offering from Xybiz Systems, Inc.
- One log-in – users log-in to the network and I-Fit system recognizes the worker and adjusts their dual surface console automatically
- Administrators can easily add and remove users with minimal training
- Designed to establish individual settings according to the ANSI/HFES 100-2007 National Ergonomic Standard Guidelines
- Height adjustments can be achieved with on-screen icon or work surface mounted hand controls



The right fit is assured for everyone with the I-Fit system, reducing stress and strain on muscles and eyes, while encouraging proper spinal alignment and posture.



Both worksurfaces move independently to ensure proper keyboard and monitor heights for each individual.



Hand controls are positioned within easy reach for everyone, up and away from chair arms.

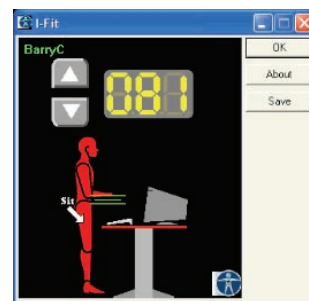
Features/Components

I-Fit Software

- Input user's anthropometrics to establish and assign a setting
- Network log-in integration
- Management reporting
- Access through icon in system tray as well as program files
- Compatible with Windows-based systems
- Licensed on a per table basis
- Color-coded, intuitive display ensures correct position

Digital desktop display

- Located on desktop surface, the digital readout displays your I-Fit number



Workers of all sizes enjoy optimal ergonomic positioning – seated or standing – with just one click. Managers get reporting features and peace of mind that their team is working smart.

XYBIX Systems Inc.
8207 SouthPark Circle
Littleton, CO 80120
Phone: 800.788.2810
Fax: 303.683.5454

