

Out of Sight for Peace of Mind—In Sight for Easy Access.

Comprehensive Cable Management Solutions.

Effective cable management is an essential part of Xybix's unique ability to provide maximum adjustability without a "rats nest" of cable clutter.

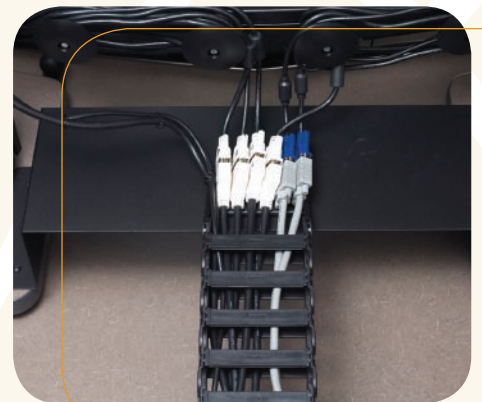
Our solution provides easy access to all wiring, while concealing unsightly cabling and securing it for repetitive movement throughout our broad range of motion.

In-panel cabling, effective Energy Chain cable management, and the innovative and exclusive DataDock desktop power/data access provides an end to end cabling solution.

Key Concepts / Benefits

Benefits

- Organized, concealed cable management system
- Only manufacturer supplying end-to-end cabling solution
- Integrated cabling system for entire workstation including consoles, panels and storage areas
- Cable management allows complete range of motion for monitors and other electronics
- Desktop access for keyboards, mice and other peripheral devices



Xybix's commitment to an ergonomically superior environment is equalled by our drive to continually improve cable management. Our entire system keeps cables out of sight, secure, and also within easy reach for maintenance.



Form • Function • Health • Performance

The Xybix Difference

- Only manufacturer with total project design and installation services
- Exclusive CableRound-Up for multiple monitor cable management
- Innovative Energy Chain for organization of main CPU, network, phone, power and other cables
- DataDock desktop ports for USB, PS/2, VGA, phone, network, and more
 - Now each user can have his own keyboard and mouse as well as other personal devices for ergonomics
- Complete in-panel cable management system
- CPU folding cable arms allow CPUs to slide out of storage areas for service
- All connections positioned at easily accessible locations
- CPU cabinets with a depth of 33" vs. industry standard 22" provides better air circulation and cable access

CableRound-Up // // // //



DataDock // // // //



CPU Folding Cable Arms // // // //



In-Panel Cable Raceway // // // //



Features/Components

DataDock

- Integrated within keyboard surface
 - Flips up easily for user access and closes flush with desktop surface
- Allows users to easily add/change keyboards, mice, and other personal electronics
- Customizable grouping of connectivity ports includes:
 - USB, PS/2, phone, network, VGA, serial, audio, power

Energy Chain

- Complete organization of main monitor, CPU and other electronic cabling that moves with dual worksurfaces
- Positioned outside of footwell
- Meets EIA/TIA bend radius requirements
- Quickly add/change cabling with easy access clips
- Industrial grade materials
- Multiple sizes for optimal use in different size furniture systems

J-Channel

- Horizontal cable management for height adjustable workstations
- Mounts under monitor surface out of sight
- Industrial grade materials

CPU Folding Cable Arms

- Exclusive to Xybix, enables CPUs to be mounted on sliding shelves for pullout access to rear of equipment
- Organizes cable behind CPUs within storage cabinets
- Easily add future cables with no disruption to work flow
- Durable steel construction

In-Panel Cable Management

- Pre-constructed out-of-sight raceways for tidy, effective cable distribution
- Vertical and horizontal cable raceways
- Multiple points of easy tool free access through panel system
- Enables smaller centers to avoid cost of an access floor

CableRound-Up

- Exclusive to Xybix, innovative excess cable management system
- Easy, intuitive installation and maintenance

XYBIX Systems Inc.
8207 SouthPark Circle
Littleton, CO 80120
Phone: 800.788.2810
Fax: 303.683.5454

